

# TEAC

## SERVICE MANUAL

---

# CT-M4801

20" CTV

---

Effective: March, 1996.

CTM4801SERV

SPECIFICATION

SYSTEM	:	PAL-B/G	
DESTINATION	:		
CHANNEL	:	2 - 4	CI
COVERAGE	:	5 - 12	CI
	:	21 - 69	CI
FREQUENCY	:	48.25 - 62.25	MHz
RANGE	:	175.25 - 224.25	MHz
	:	471.25 - 855.25	MHz
SCANNING	:	625	LINES
	:	15625	Hz
	:	50	Hz
IF FREQUENCY	:		
	:	38.9	MHz
	:	33.4	MHz
VISION/SOUND SEPARATION	:	5.5	MHz
SENSITIVITY	:		
	:	32	uV
	:	56	uV
	:	80	uV
OUTPUT POWER MAXIMUM	:	1300	mW
	:	1000	mW
CRT	:	20" (35.5cm) DIAGONAL, 22.5 mm NECK DIAMETER 90° DEFLECTION ANGLE	
SPEAKER	:	4" 8 OHM 3W X 2	
ANTENNA IMPEDANCE	:	75 OHM	
POWER CONSUMPTION	:	75 Watts	

# VIF ALIGNMENT

## A. Preparation Step (See Fig. 1)

- (i) Connect AGC bias voltage to TP101, the DC supply should be turned off this time
- (ii) Connect 14V B+ bias voltage to D404 (-) and Ground.
- (iii) Connect 14V B+ to Q401 'C'
- (iv) Connect sweep generator to tuner test point and Ground.
- (v) Connect waveform detector to TP106 and Ground.

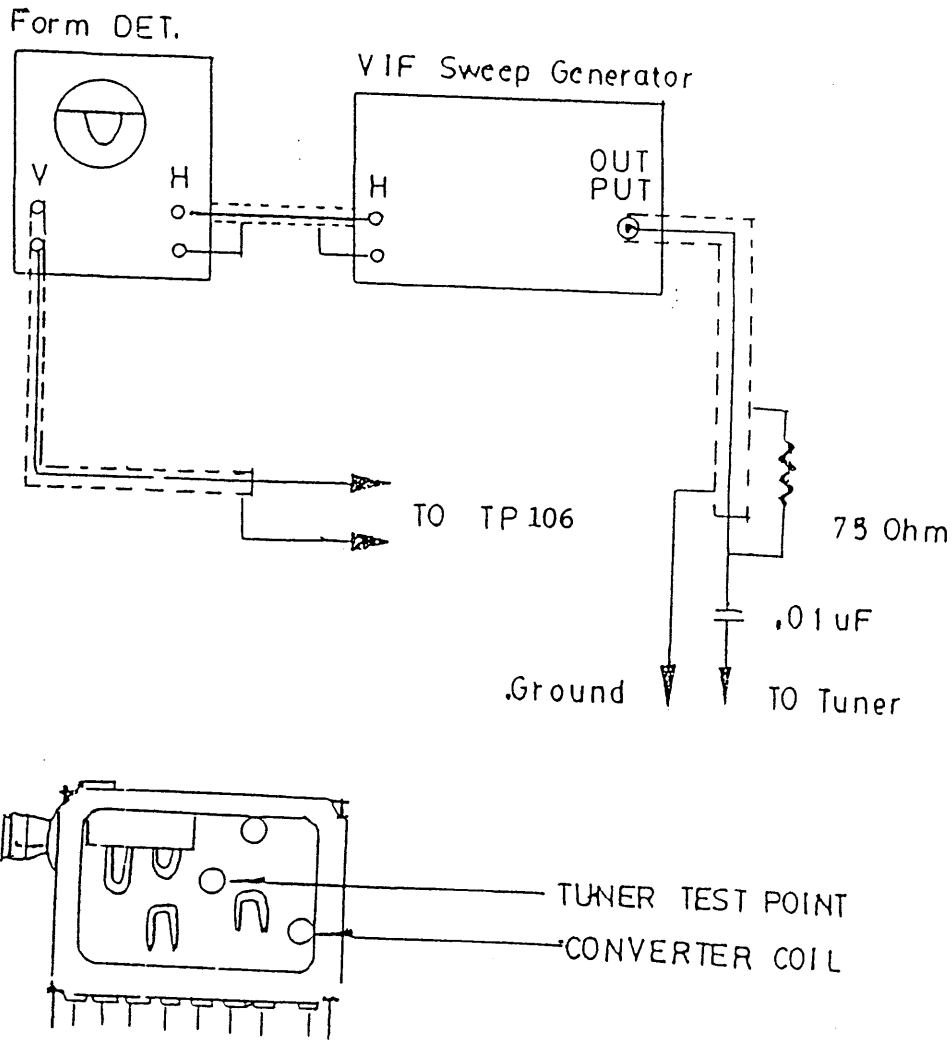


Fig. 1

B. Tank Coil Alignment Step (See Fig. 2)

- (i) Calibrate the Division of waveform Detector equal to 100 mV per div.
- (ii) The output of sweep generator should be -50dB.
- (iii) Adjust AGC bias until the output waveform equal to 1V p.p. (10 div.)

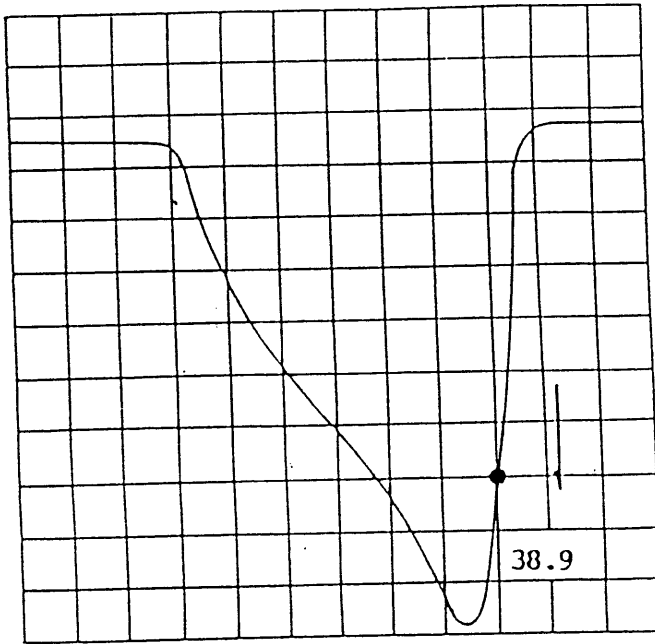


Fig. 2

- (v) Turn T101 until the marker 38.9MHz falls to the lowest point as Fig.2.

C. VIF Alignment

- (i) Connect 100 ohm resistor between TP103 and TP104.
- (ii) Adjust T104 until obtain the maximum waveform amplitude. (If Provided.)
- (iii) Adjust AGC bias, and maintain the waveform achieve 1V pp.

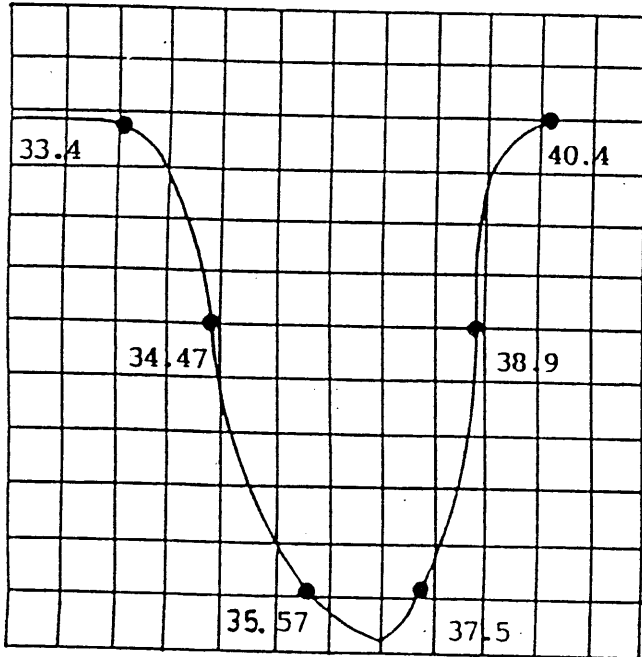


Fig.3

D. AFC Alignment

- (i) Remove the 100 ohm resistor from TP103 and P104.
- (ii) Connect Philips Pattern Generator to tuner test point (IF PIN) and Ground (Frequency is 38.9 MHz color bar).
- (iii) Connect digital multimeter to TP102.
- (iv) Adjust T103 to obtain a DC4V  $\pm 0.1V$ .

## B. SIF Alignment

- (i) Connect the sweep generator to TP106.
- (ii) Connect waveform detect to TP105.
- (iii) The output of sweep generator should be -20dB.
- (iv) Adjust T102 to obtain the waveform as Fig.5.

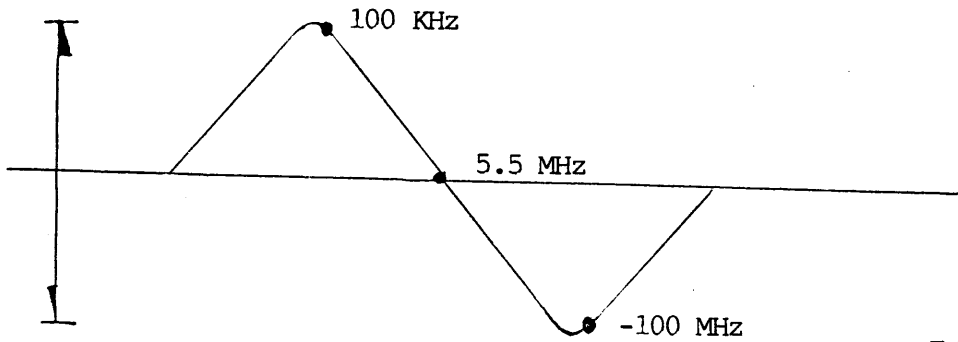


Fig.5

#### B+ ADJUSTMENT

- 1) Connect a digital volt meter to TPB+ and ground.
- 2) Set Brightness, contrast and colour to maximum.
- 3) Adjust VR901 and obtain a reading of 112V.

#### HORIZONTAL CIRCUIT ADJUSTMENT

- 1) Receive Monoscope Pattern input signal 80dBuV.
- 2) Connect terminal 20 PIN of IC401 and the ground with the Mylar Cap. 0.1 MFD.
- 3) Adjust VR404 to obtain the picture running at center.
- 4) Adjust VR405 to obtain the picture at center.

#### VERTICAL HOLD ADJUSTMENT

- 1) Receive the Monoscope Pattern.
- 2) Connect a digital voltage meter to IC401 PIN "2" and ground.
- 3) Adjust (VR401) and obtain a reading of  $2.4V \pm 0.05V$  DC.

#### VERTICAL CIRCUIT ADJUSTMENT

- 1) Receive the Monoscope Pattern.
- 2) Adjust V-size (VR402) to obtain a normal picture.

#### SUB-BRIGHTNESS ALIGNMENT

- 1) Receive a color bar pattern.
- 2) Turn the brightness, contrast and color to minimum.
- 3) Connect a digital voltage meter to TP301 and ground.
- 4) Adjust (VR303) and obtain a reading of  $1.8V \pm 0.05V$  DC.

#### WHITE BALANCE ALIGNMENT STEP

(deguss the picture by deguassing coil if necessary)

- 1) Turn the brightness, contrast and picture control to minimum value.
- 2) Turn VR501,502,504 to middle position. Turn VR503,505 to middle position.
- 3) Receive a black and white pattern.
- 4) Adjust screen volume on FBT until the brightest bar can just be seen.
- 5) Adjust VR501,504,503,505 to make the picture uniformly white.  
(9300° K)

#### FOCUS ALIGNMENT

- 1) Set the brightness and contrast to middle position.
- 2) Receive a monoscope pattern.
- 3) Adjust focus control to obtain sharpest picture.

#### AGC ALIGNMENT

- 1) Receive CH69 (UHF) and input field strength in  $63dB \pm 3dB$  input.
- 2) Adjust VR101 to the point where noise is disappeared.



PAL COLOUR ALIGNMENT

- (1) Receive Philips Pattern.
- (2) Connect Oscilloscope to T301.
- (3) Set color control to maximum position.
- (4) Adjust T301 and VR302,307 to obtain the waveform as Fig.6.
- (5)

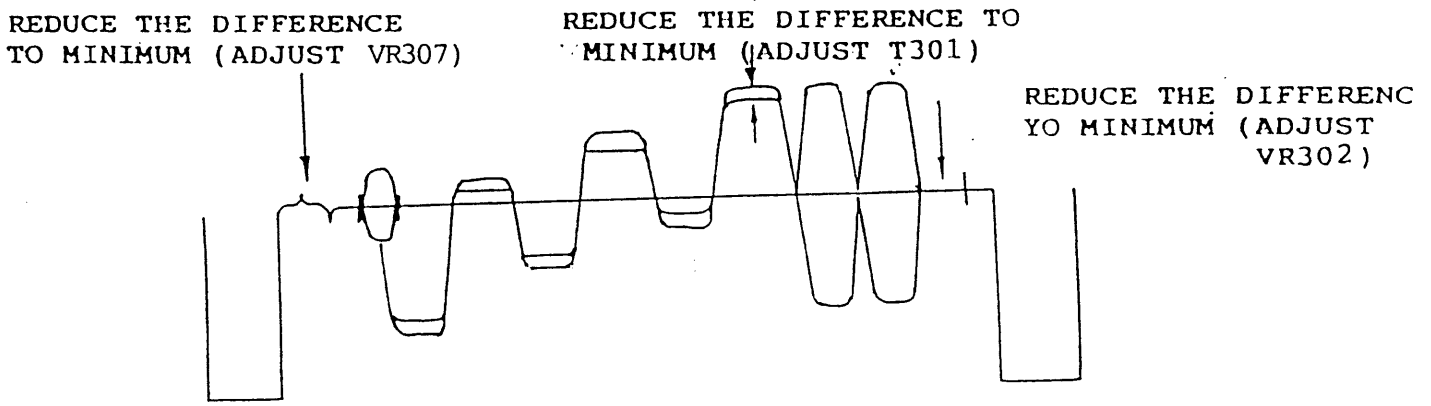


Fig.6

VOLTAGE TABLE FOR IC

SYMBOL PIN NO.	IC 601 (V)		IC 701 (V)		
1	0		0		
2	0		2.6		
3	0		2.6		
4	0		2.6		
5	4.7		2.6		
6	4.7		2.6		
7	4.7		2.6		
8	4.7		2.6		
9	4.7		0		
10	GND		0		
11	0.5		2.6		
12	0.5		0		
13	0.5		0		
14	0.18		0		
15	2.5		0		
16	GND		0		
17	4.4		0		
18	5.46		0		
19	4.4		0		
20	GND		2.6		
21	4.4				
22	4.4				
23	4.4				
24	4.7				
25	1.8				
26	2.6				
27	4.7				
28	4.7				
29	0				
30	0.2				
31	0.2				
32	0.2				
33	4.2				
34	4.7				
35	0				
36	0-4.6				
37	0-2.3				
38	0-2.6				
39	4				
40	4.7				

NOTE: VOLTAGE ARE TAKEN UNDER TUNED CONDITION WITH

- CONTRAST : Maximum Position
- BRIGHTNESS : Maximum Position
- COLOR : Maximum Position
- SIGNAL INPUR : 80 dBuV
- CHANNEL SETTING : The Last Channel of UHF High
- SIGNAL PATTERN : Colour Bar

VOLTAGE TABLE FOR IC

SYMBOL PIN NO.	IC 101 (V)	IC 201 (V)	IC 301 (V)	IC 401 (V)
1	0.49	GND	2.7-3.6	8.72
2	3	7.1	6.8	2.2
3	8.5	15	2.8	25
4	GND	14.65	1.2	8
5	3.6	1.15	1.6-2	GND
6	3.6	6.8	2	GND
7	GND	3-7.15	8.5	0.5
8	2.6	2.75	2.6	0.17
9	3	GND	1.5-4.5	25
10	5.9		2.6	13.5
11	2.9		GND	4.56
12	2.9		2.1	4.51
13	GND		6.25	2.17
14	2.9		3.45	2.35
15	6		GND	GND
16	3.2		4.3	GND
17	0.1		3.56	1.47
18	4.7		3.49	1.46
19	4.7		3.37	1.21
20	3.5		8.5	2.2

NOTE: VOLTAGE ARE TAKEN UNDER TUNED CONDITION WITH

CONTRAST : Maximum Position  
 BRIGHTNESS : Maximum Position  
 COLOR : Maximum Position  
 SIGNAL INPUT : 80 dBuV  
 CHANNEL SETTING : The Last Channel of UHF High  
 SIGNAL PATTERN : Colour Bar

VOLTAGE TABLE FOR TRANSISTOR							
	B (V)	C (V)	E (V)		B (V)	C (V)	E (V)
Q001	4.1	12.4	3.5	Q506	2.2	8.5	3.5
Q002	8.5	0	2.8	Q603	5.4	14	4.7
Q003	1.3V	0	2V	Q604	0	4.7	0
Q004	0.1	8.2	0	Q608	0.6	0	0
Q005	0.1V	0.1V	0	Q609	0	4.7	4.4
Q101	11.6	12.3	12.4	Q701	0	2.6	0
Q102	11.6	12.3	12.4	Q702	2.6	-1.8	2.6
Q103	11.6	12.3	12.4	Q901	9.1	12.9	8.4
Q104	1.1	9	0.3	Q903	0	1.2	0
Q105	0	9.2V	0	Q904	-2.5	291	0
Q106	0.6	0-31	0	Q905	112	112	111
Q107	3.1	8.2	2.5	Q906	111	112	112
Q201	16.1	15.6	15.4	Q907	5.4	0	1.7
Q401	10.2	12.4	9.5V				
Q402	0	79	0				
Q403	0	77V	0				
Q501	3.6	118	3				
Q502	3.6	105	3				
Q503	3.4	122	2.8				
Q504	2.2	8.5	3.5				
Q505	2.2	8.5	3.5				

NOTE: VOLTAGE ARE TAKEN UNDER TUNED CONDITION WITH

CONTRAST : Maximum Position  
 BRIGHTNESS : Maximum Position  
 COLOR : Maximum Position  
 SIGAL INPUT : 80 dBuV  
 CHANNEL SETTING : The Last Channel of UHF High  
 SIGNAL PATTERN : Colour Bar

Print Date : 03/28/96  
Page Number : 1

<< B.O.M. PRICE LIST FOR CUSTOMER >> - CURRENCY (USD)

PRODUCT CODE : 9320T1-280002-TV  
DESCRIPTION : GT-9320A TEAC PAL/BG W/AV IN M.BLK 240V SAA "SGS IC

ASSEMBLY NUMBER	DESCRIPTION
155-921304-00-08	HANDSET ASS'Y R/C:9213 TEAC (A) DESIGN
180-9320T1-28-02	NON-COM PART ASS'Y (MDL:9320A PAL/BG W/
180-9320T1-28-CP	COM PART ASS'Y (MDL:9320A PAL/BG W/AV IN

\*\* THIS SPARE LIST IS MADE FOR TECHNICAL / MAINTENANCE REFERENCE ONLY \*\*

\*\* THIS SPARE LIST IS MADE FOR TECHNICAL / MAINTENANCE REFERENCE ONLY \*\*

Print Date : 03/28/96                    PRODUCT CODE : 9320T1-280002-TV  
 Page Number : 2                         DESCRIPTION : GT-9320A TEAC PAL/BG W/AV IN M.BLK 240V SAA "SGS IC"

Component      Description / Location  
 Part

-----

\*\*\* ASSEMBLY : 155-921304-00-08 HANDSET ASS'Y R/C:9213 TEAC (A) DESIGN

107-800455-46 455K HZ RESONATOR CSB455EB      MURATA  
 X701

113-100005-17 CARBON FILM RESISTOR 10 OHM    1/16W +-5%  
 R701

113-103005-17 CARBON FILM RESISTOR 10K OHM   1/16W +-5%  
 R703

113-229005-17 CARBON FILM RESISTOR 2.2 OHM   1/16W +-5%  
 R702

113-330005-17 CARBON FILM RESISTOR 33 OHM    1/16W +-5%  
 R704

123-101350-60 CERAMIC CAP. 100 PF 50V +-10% (SL TYPE)  
 C702,703

127-476042-03 ELECT. CAP. 47 MFD 16V +-20%  
 C701

130-134148-01 SILICON DIODE .IN4148  
 D701,702

130-600101-00 INFRARED EMITTER EL-1L1            KODENSHI  
 LED 701

131-210719-29 TRANSISTOR 2SA719R/S                MATSUSHITA  
 Q702

131-230945-00 TRANSISTOR 2SC945 NEC  
 Q701

133-830041-31 IC M3004LAB1 (SGS)  
 IC701

172-626010-42 UL 1007 TOP COAT WIRE AWG 26    100MM RED 10 X 10MM  
 FOR REMOTE P.C.B. '+' TO BATTERY CONTACT PLATE '+'

172-626012-40 UL 1007 TOP COAT WIRE AWG 26    120MM BLACK 10 X 10 MM  
 FOR REMOTE P.C.B. '-' TO BATTERY CONTACT PLATE '-'

172-726000-99 BARE WIRE 54MM  
 W701,702

190-921306-02 REMOTE P.C.B.

514-260410-00 SELF-TAPPING SCREW 2.6 X 10    B/T (HARDEN)  
 CAB. MTG.

774-931301-00 BATTERY SPRING (+-)

774-931302-00 BATTERY SPRING (+)

774-931303-00 BATTERY SPRING (-)

810-040904-13 POLYBAG 4" X 9" X 0.04MM W/    RE-CYCLING MARK  
 FOR HANDSET

849-921302-00 CONTACT RUBBER KEY PAD            (24 KEYS)

892-921302-04 DIAL KEY PLATE - ENG STD        (24 KEYS) "47 PROG."

900-921311-58 HANDSET TOP CABINET - TEAC (A)DESIGN 9213 W/RC-617 WORDING

902-921311-01 HANDSET BOTTOM CAB. - BLACK    MOULDED (3A)

910-921301-01 BATTERY DOOR (3A)

964-921301-01 SENSOR LENS

\*\* THIS SPARE LIST IS MADE FOR TECHNICAL / MAINTENANCE REFERENCE ONLY \*\*

Print Date : 03/28/96                      PRODUCT CODE : 9320T1-280002-TV  
 Page Number : 3                              DESCRIPTION : GT-9320A TEAC PAL/BG W/AV IN M.BLK 240V SAA "SGS IC"

Component      Description / Location  
 Part

- 
- \*\*\* ASSEMBLY : 180-9320T1-28-02 NON-COM PART ASS'Y (MDL:9320A PAL/BG W/  
 002-120001-46 CRT20" A48KRD82X09/A48KRD89X09(SOUTH HEMISPHERE CRT) SAMSUNG  
 003-131424-02 TUNER OSCAR UVE33-W24/R16-3649MITSUMI  
 TUNER
- 107-738900-07 SAW FILTER TOSHIBA (F1044PS)  
 SA101
- 160-102255-27 PIN CONNECTOR 2 PINS PLUG              STRAIGHT (UL) (S.H.S)  
 CN201, 202
- 166-183040-40 SPEAKER 4" 3W BOHM
- 171-550084-02 84" AC LINE CORD (END-CUT)SAA APPW/7.5A PLUG.
- 172-726000-99 BARE WIRE 54MM  
 W104
- 179-105000-00 UL PVC TUBE 5MM DIA  
 L=950MM ,400MM FOR SPK `L`,500MM FOR SPK `R`
- 186-227503-14 BATTERY 3A
- 191-200044-09 2 PIN SOCKET ASSM'Y L=440MM  
 CN202 `2' TO SPK L `-',`1' TO SPK L `+'
- 191-200056-09 2 PIN SOCKET ASSM'Y L=560MM  
 CN201 `2' TO SPK R `-',`1' TO SPK R `+'
- 610-932001-30 GIFT BOX - TEAC DESIGN
- 663-230057-96 SERIAL NO.LABEL - OC:GT-057/96  
 1PC STUCK ON CTN , 1PC STUCK ON RATING LABEL
- 669-882001-1H RATING LABEL - TEAC DESIGN              240V
- 670-932000-0L I/MANUAL - TEAC DESIGN                      (47 PROG. SGS IC)
- 678-881303-06 TOTAL CARE STICKER - TEAC                      DESIGN (BLK & WHITE)
- 678-922109-01 EASY TUNE CARD - TEAC DESIGN
- 678-932004-05 SCREEN STICKER - TEAC DESIGN
- 690-922139-01 WARRANTY CARD- TEAC (A) DESIGN
- 693-932001-13 EAN CODE LABEL - 9313060006747
- 800-932001-00 POLYFOAM - TOP LEFT
- 800-932002-00 POLYFOAM - TOP RIGHT
- 800-932003-00 POLYFOAM - BOTTOM LEFT
- 800-932004-00 POLYFOAM - BOTTOM RIGHT
- 810-052204-14 POLYBAG 5" X 22" X 0.04MM              PO MAT W/RE-CYCLING MARK  
 FOR AC LINE CORD
- 810-091504-13 POLYBAG 9" X 15" X 0.04MM W/      RE-CYCLING MARK  
 FOR I/MANUAL
- 826-301605-00 FOAM SHEET 30" X 16" X 0.5MM      THK.  
 FOR TOP UNIT
- 826-302005-00 FOAM SHEET 30" X 20" X 0.5MM      THK.  
 FOR BOTTOM UNIT
- 884-932016-01 PRESET PLATE - BLK W/L.GREY SS(10 KEYS)
- 884-932024-01 JACK COVER - WHITE S.S. W/AV      IN HOLE W/O 21 PIN
- 889-922002-00 DOOR LOCKER COVER PLATE  
 FRONT CAB
- 900-932004-01 FRONT CABINET - MATT BLACK              SPARY (W/NAME PLATE)
- 902-932004-01 BACK CABINET
- 905-932001-01 SPEAKER BOX - BLACK MOULDED W/BLACK SPRAY
- 917-932001-00 REMOTE LENS - T.RED

\*\* THIS SPARE LIST IS MADE FOR TECHNICAL / MAINTENANCE REFERENCE ONLY \*\*

Print Date : 03/28/96

PRODUCT CODE : 9320T1-280002-TV

Page Number : 4

DESCRIPTION : GT-9320A TEAC PAL/BG W/AV IN M.BLK 240V SAA "SGS IC"

Component      Description / Location  
Part

-----  
919-932001-33 PRESET DOOR - TEAC DESIGN (W/ CABLE READY WORDING)

930-932002-10 FRONT PANEL - TEAC DESIGN

954-931301-00 STUD POST BLACK ABS

FOR FRONT CAB.

986-882801-09 NAME PLATE - TEAC DESIGN

991-932001-01 POWER KNOB - BLACK MOULDED



\*\* THIS SPARE LIST IS MADE FOR TECHNICAL / MAINTENANCE REFERENCE ONLY \*\*

Print Date : 03/28/96                      PRODUCT CODE : 9320T1-280002-TV  
 Page Number : 5                              DESCRIPTION : GT-9320A TEAC PAL/BG W/AV IN M.BLK 240V SAA "SGS IC"

Component      Description / Location  
 Part

-----  
 \*\*\* ASSEMBLY : 180-9320T1-28-CP COM PART ASS'Y (MDL:9320A PAL/BG W/AV IN

001-220027-07	FLYBACK TRANSFORMER FCM20B027 SAMSUNG T402	
008-550201-05	DEGAUSSING COIL 60T 44MM X 34 MM (W/FIVE LAYERS OF TAPE) L903	
012-102340-06	SEMI-FIXED RESISTOR EVND8AA      03B13 1KB VR901	
012-103340-06	SEMI-FIXED RESISTOR EVND8AA      03B14 10KB VR101	
012-202340-06	SEMI-FIXED RESISTOR EVND8AA      03B23 2KB VR302	
012-203340-06	SEMI-FIXED RESISTOR EVND8AA      03B24 20KB VR404,405	
012-204340-06	SEMI-FIXED RESISTOR EVND8AA      03B25 200KB VR303,401	
012-301330-06	SEMI-FIXED RESISTOR EVND2AA      03B32 300B VR503,505	
012-501340-06	SEMI-FIXED RESISTOR EVND 8AA      03B52 500B VR402	
012-502330-06	SEMI-FIXED RESISTOR EVND2AA      03B53 5KB VR501,502,504	
012-502340-06	SEMI-FIXED RESISTOR EVND8AA      03B53 5KB VR307	
013-100004-00	GLASS DELAY LINE ENF-650A11-0 WEI HAW DLY302	
013-200005-00	Y-DELAY LINE YBL50F18X DLY301	
101-190710-96	HORIZONTAL DRIVE TRANSFORMER      R0710 T401	
101-288820-95	LINE FILTER 70MH L901	
101-414025-94	SWITCHING POWER TRANSFORMER      (HL4025B) T901	
102-370600-02	TANK COIL / AFC COIL COILS      707851 T103,101	
102-670100-02	SOUND IF COILS 707532 T102	
102-770200-02	SECAM COLOR PAL DELAY LINE      MATCHING COILS 707850 T301	
105-100101-02	FIXED INDUCTIVE COIL 10UH      +-10% L105	
105-109101-02	FIXED INDUTIVE COIL 1.0 UH 10% L109,102	
105-150101-02	FIXED INDUCTIVE COIL 15UH 10% L401,104	
105-180101-02	FIXED INDUTIVE COIL 18 UH      +-10% L302	
105-181101-02	FIXED INDUCTIVE COIL 180UH      10% L501	

\*\* THIS SPARE LIST IS MADE FOR TECHNICAL / MAINTENANCE REFERENCE ONLY \*\*

Print Date : 03/28/96                      PRODUCT CODE : 9320T1-280002-TV  
 Page Number : 6                              DESCRIPTION : GT-9320A TEAC PAL/BG W/AV IN M.BLK 240V SAA "SGS IC"

Component Part	Description / Location
105-201106-02	CHOKE COIL 200UH 10% CH9012- 201K (ELEC PRODUCT) L903
105-270103-08	FIXED INDUCTIVE COIL 27UH L601
105-650052-13	LINEARITY COIL 65UH FOR 20" CRT L402
105-689101-02	FIXED INDUCTIVE COIL 6.8UH 10% L301
105-828103-02	FIXED INDUCTIVE COIL 0.82UH 10% AXIAL TYPE L101
107-105500-66	SOUND TRAP CERAMIC FILTER 5.5MHZ TPS-5.5MB MURATA CF102
107-305500-16	SOUND BYPASS CERAMIC FILTER 5.5MHZ SFE-5.5MB MURATA CF101
107-808000-66	RESONATOR 8MHZ X601
113-101105-17	CARBON FILM RESISTOR 100 OHM 1/4W +-5% R314,316,318,438
113-101205-12	CARBON FILM RESISTOR 100 OHM 1/2W +-5% R649
113-102105-17	CARBON FILM RESISTOR 1K OHM 1/4W +-5% R140,125,134,114,432,669,326,004,006,009,301
113-102205-12	CARBON FILM RESISTOR 1K OHM 1/2W +-5% R405
113-102305-75	METAL OXIDE FILM RESISTOR 1K OHM 1W +-5% R411
113-103105-17	CARBON FILM RESISTOR 10K OHM 1/4W +-5% R418,908,349,129,309,010,013,005,012
113-103105-17	CARBON FILM RESISTOR 10K OHM 1/4W +-5% R130,120,118,640,617,122,104,109,110,108
113-104105-17	CARBON FILM RESISTOR 100K OHM 1/4W +-5% R422,429,642,634,119,681,682,CF103
113-104205-12	CARBON FILM RESISTOR 100K OHM 1/2W +-5% R923
113-104305-75	METAL OXIDE FILM RESISTOR 100KOHM 1W +-5% R921
113-109205-12	CARBON FILM RESISTOR 1 OHM 1/2W +-5% R410
113-120305-75	METAL OXIDE FILM RESISTOR 12 OHM 1W +-5% R911
113-120405-75	METAL OXIDE FILM RESISTOR 12 OHM 2W +-5% R920
113-120505-75	METAL OXIDE FILM RESISTOR 12 OHM 3W +-5% R414
113-121105-17	CARBON FILM RESISTOR 120 OHM 1/4W +-5% R648
113-122105-17	CARBON FILM RESISTOR 1.2K OHM 1/4W +-5% R407,303,665
113-123105-17	CARBON FILM RESISTOR 12K OHM 1/4W +-5% R436,441

\*\* THIS SPARE LIST IS MADE FOR TECHNICAL / MAINTENANCE REFERENCE ONLY \*\*

Print Date : 03/28/96                      PRODUCT CODE : 9320T1-280002-TV  
 Page Number : 7                              DESCRIPTION : GT-9320A TEAC PAL/BG W/AV IN M.BLK 240V SAA "SGS IC"

Component Part	Description / Location
113-123405-75	METAL OXIDE FILM RESISTOR 12K OHM 2W +-5% R510,511,505
113-124105-17	CARBON FILM RESISTOR 120K OHM 1/4W +-5% R612
113-151105-17	CARBON FILM RESISTOR 150 OHM 1/4W +-5% R307,116,001,017
113-152105-17	CARBON FILM RESISTOR 1.5K OHM 1/4W +-5% R419,310,304
113-153105-17	CARBON FILM RESISTOR 15K OHM 1/4W +-5% R650,302,014,320,321,668
113-154105-17	CARBON FILM RESISTOR 150K OHM 1/4W +-5% R671
113-154205-12	CARBON FILM RESISTOR 150K OHM 1/2W +-5% R415
113-159405-75	METAL OXIDE FILM RESISTOR 1.5 OHM 2W +-5% R501
113-182105-17	CARBON FILM RESISTOR 1.8K OHM 1/4W +-5% R907,312,126
113-183105-17	CARBON FILM RESISTOR 18K OHM 1/4W +-5% R657,313
113-184105-17	CARBON FILM RESISTOR 180K OHM 1/4W +-5% R618
113-202605-75	METAL OXIDE FILM RESISTOR 2K OHM 5W +-5% R413
113-203105-17	CARBON FILM RESISTOR 20K OHM 1/4W +-5% R325
113-204105-17	CARBON FILM RESISTOR 200K OHM 1/4W +-5% R408
113-221105-17	CARBON FILM RESISTOR 220 OHM 1/4W +-5% R423,117,666
113-221205-12	CARBON FILM RESISTOR 220 OHM 1/2W +-5% R406
113-222105-17	CARBON FILM RESISTOR 2.2K OHM 1/4W +-5% R206,513,509,507,514,515,516,008
113-223105-17	CARBON FILM RESISTOR 22K OHM 1/4W +-5% R435,428,137,635,606
113-224105-17	CARBON FILM RESISTOR 220K OHM 1/4W +-5% R207,107
113-229105-17	CARBON FILM RESISTOR 2.2 OHM 1/4W +-5% R208,404
113-229405-75	METAL OXIDE FILM RESISTOR 2.2 OHM 2W +-5% R902,201
113-243105-17	CARBON FILM RESISTOR 24K OHM 1/4W +-5% R305
113-270105-17	CARBON FILM RESISTOR 27 OHM 1/4W +-5% R115
113-270405-75	METAL OXIDE FILM RESISTOR 27 OHM 2W +-5% R912
113-272105-17	CARBON FILM RESISTOR 2.7K OHM 1/4W +-5% R319,317,315,426,623

\*\* THIS SPARE LIST IS MADE FOR TECHNICAL / MAINTENANCE REFERENCE ONLY \*\*

Print Date : 03/28/96                      PRODUCT CODE : 9320T1-280002-TV  
 Page Number : 8                              DESCRIPTION : GT-9320A TEAC PAL/BG W/AV IN M.BLK 240V SAA "SGS IC"

Component Part	Description / Location
113-272205-12	CARBON FILM RESISTOR 2.7K OHM 1/2W +-5% R922,412,503,502,504
113-273101-67	METAL FILM RESISTOR 27K OHM 1/4W +-1% R151
113-273105-17	CARBON FILM RESISTOR 27K OHM 1/4W +-5% R425,138
113-274105-17	CARBON FILM RESISTOR 270K OHM 1/4W +-5% R619,451
113-303105-17	CARBON FILM RESISTOR 30K OHM 1/4W +-5% R123
113-330105-17	CARBON FILM RESISTOR 33 OHM 1/4W +-5% R433
113-331105-17	CARBON FILM RESISTOR 330 OHM 1/4W +-5% R905
113-332105-17	CARBON FILM RESISTOR 3.3K OHM 1/4W +-5% R904,403,128
113-333105-17	CARBON FILM RESISTOR 33K OHM 1/4W +-5% R670,660,676,003
113-334105-17	CARBON FILM RESISTOR 330K OHM 1/4W +-5% R658,401,686
113-334305-75	METAL OXIDE FILM RESISTOR 330KOHM 1W +-5% R913
113-338405-75	METAL OXIDE FILM RESISTOR 0.33OHM 2W +-5% R914
113-390605-75	METAL OXIDE FILM RESISTOR 39 OHM 5W +-5% R915
113-391105-17	CARBON FILM RESISTOR 390 OHM 1/4W +-5% R506,508,450
113-471105-17	CARBON FILM RESISTOR 470 OHM 1/4W +-5% R654,127,007
113-472105-17	CARBON FILM RESISTOR 4.7K OHM 1/4W +-5% R910,602,603,601,427,139,672,673,674,016,011
113-472105-17	CARBON FILM RESISTOR 4.7K OHM 1/4W +-5% R607,605,653,604,638,662,663,664
113-475105-17	CARBON FILM RESISTOR 4.7M OHM 1/4W +-5% R322,323,324
113-479105-17	CARBON FILM RESISTOR 4.7 OHM 1/4W +-5% R160
113-479605-51	WIRE WOUND CEMENT RES. 4.7 OHM5W +-5% R901
113-511105-17	CARBON FILM RESISTOR 510 OHM 1/4W +-5% R512
113-512105-17	CARBON FILM RESISTOR 5.1K OHM 1/4W +-5% R205
113-514105-17	CARBON FILM RESISTOR 510K 1/4W+-5% R420
113-561105-17	CARBON FILM RESISTOR 560 OHM 1/4W +-5% R431
113-562105-17	CARBON FILM RESISTOR 5.6K OHM 1/4W +-5% R203,202,421,105,101,102,113,103,622,106

\*\* THIS SPARE LIST IS MADE FOR TECHNICAL / MAINTENANCE REFERENCE ONLY \*\*

Print Date : 03/28/96                      PRODUCT CODE : 9320T1-280002-TV  
 Page Number : 9                              DESCRIPTION : GT-9320A TEAC PAL/BG W/AV IN M.BLK 240V SAA "SGS IC"

Component Part	Description / Location
113-563105-17	CARBON FILM RESISTOR 56K OHM 1/4W +-5% R136,671,002
113-565205-92	CARBON COMPOSITION RESISTOR 5.6M 1/2W +-5% R916,917
113-680405-75	METAL OXIDE RESISTOR 68 OHM 2W +-5% R442
113-681105-17	CARBON FILM RESISTOR 680 OHM 1/4W +-5% R402,124
113-682105-17	CARBON FILM RESISTOR 6.8K OHM 1/4W +-5% R909,903,153
113-688205-42	FUSING RESISTOR 0.68 OHM 1/2W +-5% R918,919
113-688305-42	FUSING RESISTOR 0.68 OHM 1W +-5% R417,416
113-820105-17	CARBON FILM RESISTOR 82 OHM 1/4W +-5% R112
113-821105-17	CARBON FILM RESISTOR 820 OHM 1/4W +-5% R639,610,609
113-822105-17	CARBON FILM RESISTOR 8.2K OHM 1/4W +-5% R906,204
113-822505-75	METAL OXIDE FILM RESISTOR 8.2KOHM 3W +-5% R132
113-823105-17	CARBON FILM RESISTOR 82K OHM 1/4W +-5% R409
114-210200-01	THERMISTOR (NICHICON ZPB53 BL 200C) TH901
123-100340-60	CERAMIC CAP. 10PF +-5% 50V (SL TYPE) C612
123-101340-93	CERAMIC CAP. 100PF 50V +-5% (NPO) C103
123-101350-60	CERAMIC CAP. 100 PF 50V +-10% (SL TYPE) C605
123-102850-10	CERAMIC CAP. 0.001 MFD 2KV +-10% MATSUSHITA C501
123-103370-90	CERAMIC CAP. 0.01 MFD 50V +80 -20% C402,304,125,122,118,115,116,114
123-104270-90	CERAMIC CAP. 0.1 MFD 25V +80 -20% C681
123-122551-90	CERAMIC CAP. 0.0012 MFD 500V +-10% (B TYPE) MATSUSHITA C433
123-150340-93	CERAMIC CAP. 15 PF 50V +-5% (NPO) C609,610,319
123-181350-60	CERAMIC CAP. 180 PF 50V +-10% (SL TYPE) C431,438
123-221350-60	CERAMIC CAP. 220 PF 50V +-10% (SL TYPE) C427
123-221551-90	CERAMIC CAP. 220 PF 500V +-10% MATSUSHITA C915
123-222350-90	CERAMIC CAP. 0.0022 MFD 50V +-10% (B TYPE) C601,607

\*\* THIS SPARE LIST IS MADE FOR TECHNICAL / MAINTENANCE REFERENCE ONLY \*\*

Print Date : 03/28/96                      PRODUCT CODE : 9320T1-280002-TV  
 Page Number : 10                              DESCRIPTION : GT-9320A TEAC PAL/BG W/AV IN M.BLK 240V SAA "SGS IC"

Component Part	Description / Location
123-222466-41	CERAMIC CAP. 0.0022 MFD 400V +-20% ECK-DNS222MEX MATSUSHITA C912
123-222850-10	CERAMIC CAP. 0.0022 MFD 2KV +-10% MATSUSHITA C911
123-223370-90	CERAMIC CAP. 0.022 MFD 50V +80-20% C626,627,628
123-300340-93	CERAMIC CAP. 30 PF 50V +-5% (NPO) C602,603
123-302350-90	CERAMIC CAP. 0.003 MFD 50V +-10% (B TYPE) C005
123-331350-60	CERAMIC CAP. 330 PF 50V +-10% (SL TYPE) C502,503,504
123-390340-93	CERAMIC CAP. 39PF 50V +-5% (NPO) C604,121,303
123-470340-60	CERAMIC CAP. 47 PF 50V +-5% (SL TYPE) C123
123-471350-60	CERAMIC CAP. 470 PF 50V +-10% (SL TYPE) C126
123-472550-90	CERAMIC CAP. 0.0047 MFD 500V +-10% (B TYPE) C419,424,913
123-472552-90	CERAMIC CAP. 0.0047 MFD 500V +-10% (B TYPE) SMALL SIZE C903,904,907
123-821850-10	CERAMIC CAP. 820 PF 2KV +-10% (SL TYPE) MATSUSHITA C914,437
124-224061-03	TANTALIUM CAP. 0.22 MFD 35V +-10% C413
126-102071-01	MYLAR CAP. 0.001 MFD 50V +-10% C428
126-103071-01	MYLAR CAP. 0.01 MFD 50V +-10% C207,441
126-104071-01	MYLAR CAP. 0.1 MFD 50V +-10% C908,205,208,411,317,318,407,429,306,307,108,106
126-104071-01	MYLAR CAP. 0.1 MFD 50V +-10% C104,313,314,606
126-104101-31	POLYPROPYLENE CAP. 0.1 MFD 100V +-10% C440
126-153071-01	MYLAR CAP. 0.015 MFD 50V +-10% C422
126-222071-01	MYLAR CAP. 0.0022 MFD 50V +-10% C204,421,621
126-223071-01	MYLAR CAP. 0.022 MFD 50V +-10% C409
126-332071-01	MYLAR CAP. 0.0033 MFD 50V +-10% C316
126-332161-41	METALIZED POLYPROPYLENE CAP. 0.0033 MFD 1600V +-10% C435,436
126-333071-01	MYLAR CAP. 0.033 MFD 50V +-10% C906,124
126-334071-01	MYLAR CAP. 0.33 MFD 50V +-10% C403

\*\* THIS SPARE LIST IS MADE FOR TECHNICAL / MAINTENANCE REFERENCE ONLY \*\*

Print Date : 03/28/96                      PRODUCT CODE : 9320T1-280002-TV  
 Page Number : 11                              DESCRIPTION : GT-9320A TEAC PAL/BG W/AV IN M.BLK 240V SAA "SGS IC"

Component Part	Description / Location
126-392071-01	MYLAR CAP. 0.0039 MFD 50V +-10% C426
126-473071-01	MYLAR CAP. 0.047 MFD 50V +-10% C315
126-473211-41	METALLIZED POLYPROPYLENE CAP 0.047 MFD 250V +-10% VDE C902
126-474071-01	MYLAR CAP. 0.47 MFD 50V +-10% C430
126-474201-31	POLYPROPYLENE CAP 0.47 MFD 200V +-10% C414
126-474211-41	METALLIZED POLYPROPYLENE CAP 0.47 MFD 250V +-10% VDE C901
126-562071-01	MYLAR CAP. 0.0056 MFD 50V +-10% C425
126-563071-01	MYLAR CAP. 0.056 MFD 50V +-10% C128
127-105072-03	ELECT. CAP. 1 MFD 50V +-20% C210,423,611,112,410
127-105132-03	ELECT. CAP. 1 MFD 160V +-20% C415,320
127-106042-03	ELECT. CAP. 10 MFD 16V +-20% C619,110,309,312,616,624,006,008,009
127-106072-03	ELECT. CAP. 10 MFD 50V +-20% C201
127-106104-03	ELECT CAP. 10 MFD 100V +-20% 105°C C910
127-106252-03	ELECT. CAP. 10 MFD 250V +-20% C420
127-107042-03	ELECT. CAP. 100 MFD 16V +-20% C408,119,310
127-107062-03	ELECT. CAP. 100 MFD 35V +-20% C202
127-107132-03	ELECT. CAP. 100 MFD 160V +-20%"NICHICON" C434
127-107402-03	ELECT. CAP. 100 MFD 400V +-20% C905
127-108052-03	ELECT. CAP. 1000 MFD 25V +-20% C211
127-225072-03	ELECT. CAP 2.2 MFD 50V +-20% C129,620,109
127-226042-03	ELECT. CAP. 22 MFD 16V +-20% C321,132,617,308
127-227042-03	ELECT. CAP. 220 MFD 16V +-20% C622,625
127-227062-03	ELECT. CAP. 220 MFD 35V +-20% C916,416
127-228042-03	ELECT. CAP. 2200 MFD 16V +-20% C412
127-228052-03	ELECT. CAP. 2200 MFD 25V +-20% C417

\*\* THIS SPARE LIST IS MADE FOR TECHNICAL / MAINTENANCE REFERENCE ONLY \*\*

Print Date : 03/28/96                      PRODUCT CODE : 9320T1-280002-TV  
 Page Number : 12                              DESCRIPTION : GT-9320A TEAC PAL/BG W/AV IN M.BLK 240V SAA "SGS IC"

Component Part	Description / Location
127-336042-03	ELECT. CAP. 33 MFD 16V +-20% C001
127-336042-23	ELECT. CAP. BIPOLAR 33 MFD 16V+-20% C003,007
127-336132-03	ELECT CAP. 33 MFD 160V +-20% C918
127-474072-03	ELECT. CAP. 0.47 MFD 50V +-20% C206,203
127-475052-03	ELECT. CAP. 4.7 MFD 25V +-20% C305,107,113,117,111
127-476042-03	ELECT. CAP. 47 MFD 16V +-20% C401,618
127-476072-03	ELECT. CAP. 47 MFD 50V +-20% C406
127-476072-07	ELECT.CAP. 47 MFD 50V +-20%    NICHICON C909
127-477042-03	ELECT. CAP. 470 MFD 16V +-20% C209,160,432
130-134148-01	SILICON DIODE IN4148 D101-103,604,301-303,408,501-503,606,608,612
130-134148-01	SILICON DIODE IN4148 D001,002,003,613
130-310012-00	RECTIFIER DIODE RU2 SANKEN D404
130-310156-00	BRIDGE RECTIFIER RB156 SANKEN BR901
130-311541-60	RECTIFIER DOIDE 1R5JU41 D904
130-314004-01	RECTIFIER DIODE 1N4004 D401,402
130-315295-00	RECTIFIER DIODE S5295G TOSHIBA D903,901,902,905,405,403,407
130-410039-01	ZENER DIODE 3.9V ZD101
130-410051-01	ZENER DIODE 5.1V 1/2W +-5% ZD601
130-410056-01	ZENER DIODE 5.6V ZD604
130-410082-01	ZENER DIODE 8.2V ZD901
130-410100-01	ZENER DIODE 10V 1/2W ZD403,405
130-410574-00	ZENER DIODE UPC 574J NEC OR    KA33V SAMSUNG ZD102
130-411091-01	ZENER DIODE 9.1V ZD902,401,402
130-422120-00	ZENER DIODE 1W 12V ZD404,406
130-512044-00	LED 3MM RED 204HDC LED601



\*\* THIS SPARE LIST IS MADE FOR TECHNICAL / MAINTENANCE REFERENCE ONLY \*\*

Print Date : 03/28/96                      PRODUCT CODE : 9320T1-280002-TV  
 Page Number : 13                              DESCRIPTION : GT-9320A TEAC PAL/BG W/AV IN M.BLK 240V SAA "SGS IC"

Component Part	Description / Location
131-211013-18	TRANSISTOR 2SA1013 (R) TOSHIBA Q906
131-211015-00	TRANSISTOR 2SA1015 TOSHIBA Q101,102,610,002,003,103
131-220774-20	TRANSISTOR 2SB774/Q/R/S                      MATSUSHITA Q907
131-230388-00	TRANSISTOR 2SC388A TOSHIBA Q104
131-230945-00	TRANSISTOR 2SC945 NEC Q604,504,505,506,105
131-231317-00	TRANSISTOR 2SC1317 MATSUSHITA Q603
131-231815-25	TRANSISTOR 2SC1815 TOSHIBA Q903,901,609,107,681,001,004,005,108
131-232230-00	NPN-TR 2SC2230A-Y (TOSHI) TO92VCE=180V IC=.1A HFE=120-240 Q608
131-232335-30	TRANSISTOR 2SC2335 L/K NEC Q905
131-232482-00	TRANSISTOR 2SC2482 TOSHIBA Q402,501,502,503
131-240400-00	TRANSISTOR 2SD400E/F SANYO Q201,401
131-241431-00	TRANSISTOR 2SD1431 TOSHIBA                      WITH MICA SHEET (24MM X 33MM) Q904
131-241555-00	TRANSISTOR 2SD1555 TOSHIBA Q403
131-462369-00	TRANSISTOR PH2369 PHILIPS Q106
133-108213-31	IC TDA8213 SGS IC101
133-108217-31	IC TDA8217 SGS IC301
133-201013-33	I.C. TDA1013B PHILIPS IC201
133-208214-31	IC TDA8214B SGS IC401
133-306356-31	IC ST6356 SGS IC601
136-500337-00	REMOTE RECEIVER (KODENSHI                      HC-337M) OPT601
137-443618-20	CRYSTAL 4.43 MHZ X301
146-100001-14	POWER SWITCH (ESB-99957S COST COST REDUCTION) S602
146-100002-13	TACT SWITCH KSM0634A HDK S601,603,604,605,606,612
146-104016-13	TACT SWITCH 31TM116A UNITRONIC S607,608,609,610
160-101001-08	PIN CONNECTOR 1 PIN PLUG                      STRAIGHT CN501,903,904

\*\* THIS SPARE LIST IS MADE FOR TECHNICAL / MAINTENANCE REFERENCE ONLY \*\*

Print Date : 03/28/96      PRODUCT CODE : 9320T1-280002-TV  
 Page Number : 14      DESCRIPTION : GT-9320A TEAC PAL/BG W/AV IN M.BLK 240V SAA "SGS IC"

Component Part	Description / Location
160-102255-27	PIN CONNECTOR 2 PINS PLUG STRAIGHT (UL) (S.H.S) CN601
160-102805-08	PIN CONNECTOR 2 PIN PLUG STRAIGHT CN902
160-103805-08	PIN CONNECTOR 3 PIN PLUG STRAIGHT CN402
160-104805-08	PIN CONNECTOR 4 PIN PLUG STRAIGHT CN401
160-109255-27	PIN CONNECTOR 9 PINS PLUG CN301
161-470002-00	RCA JACK HYJ-032-03B BLACK "MING FUNG" J002
161-470003-00	RCA JACK HYJ-032-03Y YELLOW "MING FUNG" J001
161-540004-01	CRT SOCKET ISH-01 IN CHANG FOR CRT P.C.B.'
172-620005-40	UL 1007 TOP COAT WIRE AWG 20 50MM BLACK 5 X 5MM MAIN P.C.B. 'M TO 'M'
172-620007-40	UL 1007 TOP COAT WIRE #20 70MMBLACK 5 X 5 MM MAIN P.C.B. 'L' TO 'L'
172-620014-40	UL 1007 TOP COAT WIRE AWG 20 140MM BLACK 10 X 10 MM MAIN P.C.B. 'D' TO 'D'
172-626004-40	UL 1007 TOP COAT WIRE AWG 26 40MM BLACK 5 X 5 MM MAIN PCB 'R145' TO 'W184'
172-626008-40	UL 1007 TOP COAT WIRE AWG 26 80MM BLACK 10 X 10 MM Q904 LUG TO MAIN PCB 'I', MAIN PCB 'C' TO 'C'
172-626010-40	UL 1007 TOP COAT WIRE AWG 26 100MM BLACK 10 X 10 MM Q403 LUG TO MAIN P.C.B. 'E'
172-626012-40	UL 1007 TOP COAT WIRE AWG 26 120MM BLACK 10 X 10 MM MAIN PCB 'C126' GND TO R139,C126 TO R142
172-626014-43	UL 1007 TOP COAT WIRE AWG 26 140MM ORANGE 10 X 10 MM MAIN P.C.B. 'A' TO 'A'
172-626018-43	UL 1007 TOP COAT WIRE AWG 26 180MM ORANGE 10 X 10 MM MAIN P.C.B. 'B' TO 'B'
172-726000-99	BARE WIRE 54MM W093-095,097-102,105-112,114,116-129,131-138
172-726000-99	BARE WIRE 54MM W142-149,151-152,154-157,159-171,173-174,177-186
172-726000-99	BARE WIRE 54MM W189,191,193,195-196,198-201,203-208,211,215-218
172-726000-99	BARE WIRE 54MM W502,503,826,D610,R148
172-830080-99	FLAT BRIDED WIRE 1200MM FOR CRT GND
179-001010-00	OIL SLEEVING 1 MM DIA. FOR BR901,D904,404
182-233150-03	FUSE T3.15A 250V F901
190-882000-04	POWER SWITCH P.C.B. (270995)

\*\* THIS SPARE LIST IS MADE FOR TECHNICAL / MAINTENANCE REFERENCE ONLY \*\*

Print Date : 03/28/96

PRODUCT CODE : 9320T1-280002-TV

Page Number : 15

DESCRIPTION : GT-9320A TEAC PAL/BG W/AV IN M.BLK 240V SAA "SGS IC"

Component Part	Description / Location
190-932001-00	CRT P.C.B. (140494)
190-93202N-XB	MAIN P.C.B. (120296)
191-100030-09	1 PIN SOCKET ASSM'Y L=300MM FOR CN501
191-100035-09	1 PIN SOCKET ASSM'Y L=400MM (DOUBLE INSULATION) BROWN FROM POWER SWITCH TO CN903
191-100036-09	1 PIN SOCKET ASSM'Y L=400MM (DOUBLE INSULATION) BLUE FROM POWER SWITCH TO CN904
191-201001-07	2 PINS SOCKET ASS'Y L=160MM FOR CN601 TO POWER SWITCH
191-300040-09	3 PIN SOCKET ASSM'Y CN402 '1' TO CRT P.C.B. 'K'
191-300040-09	3 PIN SOCKET ASSM'Y CN402 '2' TO CRT P.C.B. 'L'
191-300040-09	3 PIN SOCKET ASSM'Y CN402 '3' TO CRT P.C.B. 'J'
191-901001-07	9 PIN SOCKET ASS'Y L=460MM CN301 TO CRT PCB '1' TO 'A', '2' TO 'B', '3' TO 'C'
191-901001-07	9 PIN SOCKET ASS'Y L=460MM '4' TO 'D', '5' TO 'E', '6' TO 'F', '7' TO 'G'
191-901001-07	9 PIN SOCKET ASS'Y L=460MM '8' TO 'H', '9' TO 'I'
504-305006-10	MACHINE SCREW 3 X 6 B/M FOR POWER SWITCH BKT.MTG.
514-400414-10	SELF-TAPPING SCREW 4 X 14 B/T (HARDEN) FOR FLYBACK
514-400418-10	SELF-TAPPING SCREW 4 X 18 B/T (HARDEN) FOR SPK'R & REAR CAB MTG.
514-400420-10	SELF-TAPPING SCREW 4 X 20 B/T (HARDEN) FOR SPEAKER BOX AND FRONT CAB.
514-400425-10	SELF-TAPPING SCREW 4 X 25 B/T (HARDEN) FOR CAB FNT & REAR
515-303406-10	SELF-TAPPING SCREW 3 X 6 W/B/T (HARDEN) FOR SPEAKER MTG.
515-303408-10	SELF-TAPPING SCREW 3 X 8 W/B/T (HARDEN) 2-PUSH BUTTON,1-FRONT PANEL,2-SPEAKER MTG.
516-300415-10	SELF-TAPPING SCREW 3 X 15 B/T (HARDEN) FOR POWER SWITCH
517-303312-10	SELF-TAPPING SCREW 3 X 12 W/A W/H=7MM (HARDEN) FOR HEAT SINK (A) & (B)
524-932901-01	CRT MOUNTING SCREW 7 X 40 VP (HARDEN) FOR CRT MTG.
540-020040-01	BRASS EYELET 2X4MM FOR POWER SWITCH P.C.B.
580-101261-01	CABLE TIE L=100MM 2- CRT PCB, '2'- FLYBACK, 2- CN301, 1- CN401, 1- CN402
580-101261-01	CABLE TIE L=100MM FOR POWER SWITCH P.C.B.
622-882802-00	FELT L240 X W17 X T0.5MM W/TAPE FOR REAR CAB.

\*\* THIS SPARE LIST IS MADE FOR TECHNICAL / MAINTENANCE REFERENCE ONLY \*\*

Print Date : 03/28/96                    PRODUCT CODE : 9320T1-280002-TV  
 Page Number : 16                        DESCRIPTION : GT-9320A TEAC PAL/BG W/AV IN M.BLK 240V SAA "SGS IC"

Component Part	Description / Location
630-083216-00	FIBRE WASHER BETWEEN POWER SW. & MTG.BLK.
723-882101-00	MTG BRACKET FOR POWER SW.
737-143010-00	METAL WASHER OD=14 ID=3 T=1 FOR SPEAKER BOX
744-881301-00	SPRING FOR C.R.T. MOUNTING 5.2 X 42 X 0.6MM
746-063101-00	TEST PIN:TOTAL LENGTH 18.6MM THK:0.8MM TP103,104
750-063101-00	SOLDERING LUG LEG:8X4MM FOR HEAT SINK (A) & (B)
766-686801-00	FUSE HOLDER FOR F901
777-881301-00	SPRING IN 10 X L12 FOR POWER KNOB
780-931301-00	BRASS HEAT SINK FOR IC401
781-882001-02	ALUMINIUM HEAT SINK (B) FOR Q403
781-882102-02	ALUMINIUM HEAT SINK (A) FOR Q904
783-931301-01	SHIELD CAN
783-931302-02	SHIELD CAN COVER
834-230801-00	RUBBER WASHER OD=23 , ID=8 , T=1.0 FOR CRT MTG.
840-011024-21	PAD CORD L240 X W10 X T1 MM W/TAPE FOR BETWEEN CRT AND FRONT CAB.
840-051030-11	RUBBER PAD (ONE SIDE W/TAPE)
840-051520-11	RUBBER PAD (ONE SIDE W/TAPE)
896-882101-00	POWER BOARD COVER (UL)
929-881301-00	LED HOLDER BKT FOR LED 601
939-881302-00	POWER SWITCH ADAPTOR
954-882100-00	AC LINE CORD CLIP
954-892001-00	HIGH VOLTAGE SPACER FOR CRT
954-932901-00	CRT MOUNTING INSERT                    (HIGH = 22MM) FOR FRONT CAB.
977-882001-01	PUSH BUTTON - BLACK MOULDED

